

Govt. of India
Ministry of Human Resource Development
Dept. of School Education and Literacy
Mid Day Meal Division

PAB-MDM meeting
to consider and approve
AWP&B 2019-20

(Date of the meeting: 06-05.2019)



मध्याह्न भोजन योजना
Mid Day Meal Scheme
APPRAISAL NOTE

UT: Daman & Diu

INDEX

Sl. No.	CHAPTER	Page no.
Overview	Pre-requisite steps for submission of AWP&B Main Issues from Appraisal, Best practices, ATN	2-3
Part-A	General Information	4
Part-B	Review of performance during 2018-19	5-10
Part-C	Recommendations of Appraisal team and quantification of variables for central assistance during 2019-20.	10-12
Part-D	Analysis sheet.	13-21

Overview: Status on Pre-requisite steps required for submission of AWP&B

i).	Annual Work Plan and Budget should be approved by State Steering cum Monitoring Committee (SSMC).	Yes
ii).	A confirmation should be submitted that	
	a) Funds are released through e-transfer from State/ District to 100% schools.	Yes
	b) 100% payment of cost of food grains has been made FCI up to previous month of PAB meeting.	Yes
	c) All the pending bills of FCI for the previous years, if any, have been paid	Yes
	d) 100% payment of honorarium has been made to cook-cum-helpers on monthly basis up to the previous month of the PAB meeting through e-transfer in to their bank accounts.	Yes
iii).	Automated Monitoring System should have been operationalised.	Yes
iv).	Annual and Monthly data entry for the FY 2018-19 should be completed up to the previous month of the PAB meeting.	Yes
v).	An Emergency Medical Plan should be in place. The contingency plan of Odisha has already been shared with all States/UTs for reference.	Yes
vi).	Action taken note on commitments given by the State Govt. during PAB Meeting of 2018-19.	Yes
vii).	Separate and detailed MME plan should be submitted.	Yes
viii).	Plan should be submitted duly signed by the Principal Secretary/Secretary of the State/UT within the scheduled date.	Yes

i. Best Practices:

- a) Additional Contribution in cooking cost - Rs. 7.99 for primary and Rs. 8.20 for upper primary is being provided over and above mandatory UT share.
- b) Rs. 2721 per month per cook additional Payment of Honorarium to Cook-cum-helpers from their UT funds.
- c) 100% school have user LPG for preparation of meal at school.
- d) Safe drinking water with RO systems is available in all 94 schools.

- e) 100% cook-cum-helpers provided training for cooking, preparation of meals and safety hygiene by reputed Training Institute.
- f) Tithi Bhojan in all the schools published roster of the donors and date of tithi bhojan.

ii. Issues:

- iii. Less coverage of children- both in Primary and Upper Primary level the coverage is 95% and 92% respectively.
- iv. Less coverage of working days at Primary and Upper Primary level total working days covered was 230 days against approval of 233 days during 2018-19.
- v. Delay of release of fund almost by 60 days from the UT treasury to the District level.
- vi. Only two District level Monitoring meeting conducted under the Chairmanship of Member of Parliament.

vii. Assurances given by the UT during PAB-2018-19 MDM-meeting

Action Taken Report as per PAB minutes 2018-19		
Sr. No.	Points	Action Taken
1	Coverage of Children	By awareness campaigns and adoption of TithiBhojan, slight improvement in coverage of children in availing MDM i.e. 95% in Primary & 92% in Upper Primary
2	Delay in release of fund to district	In 2018-19, there is no delay in release of funds to district level in 1st Installment and Adhoc Grant. While, there is a delay held in releasing of 2nd Installment of funds due to implementation of Filing through e-office.
3	Use of LPG	All Schools are using LPG as mode of cooking
4	Meeting of District Level Steering cum Monitoring Committee	Two Meetings (one Meeting in each District) of District Level Steering cum Monitoring Committee under the Chairpersonship of the Hon'ble M.P. had taken place in year 2018-19. Busy Schedule of M.P., it may not be taken place as per guidelines.
5	Use of Millets	The Department may propose to include Millets in MDM in the year 2019-20 through the centralized kitchen by NGO.
6	Variation of Data	The Department had taken necessary step for entering the data regarding utilization of payment of honorarium to CCHs (both central and UT share) in the web portal
7	Provision of Safe drinking water	In the UT, all Schools have 100% safe drinking water facility and have water filtration facilities also.

8	Ayushman Bharat	Selected Female Teachers in each schools were instructed to provide Menstrual Hygiene Programme to the Girl students . As well as, from the Health Department, awareness programmes have been conducted. Further, Incinerators and Vending Machine have been installed in all Govt. Upper Primary Schools
9	School Health Programme	Regular Health Check up Programmes have been conducted in each school by the Doctors and staff from the Health Department. Yoga Activities are being carried out in each school in Prayer. For Girls, Karate Classes are being conducted in each Upper Primary Schools for Self Defence.
10	Kitchen Garden	Kitchen Gardens have been adopted in many schools by the students by planting vegetables such brinjal, fenugreek, cabbage, cauliflower, chillies, etc and the vegetables grown in the Kitchen garden are being utilized for MDM purpose
11	Social Audit	Social audit has been conducted in the UT Administration with the help of NGO/ Mahila Mandal during the year 2018-19. The report has been submitted to the MHRD.

Part-A : General Information

Introduction:

Government of India, on 15th August, 1995 launched the scheme of National Programme of Nutritional Support to Primary Education also known as Mid-Day-Meal Programme. Under this scheme, students of primary classes were to be provided wheat @ 3 kg per student per month (for 10 months in a year) subject to 80% attendance. The first radical shift took place in 2003-04 with the distribution of hot cooked meal to children in primary schools. Subsequently class VI, VII & VIII were also included under MDMS for serving of hot cooked meal under MDM. Dadra & Nagar Haveli is among the UT which is contributing more than their mandatory share towards cooking cost and honorarium to cook-cum-helpers.

1. Basic Information:

(Year 2018-19)

S. No.	INDICATORS	STATUS			Coverage %age		
		Pry	U.Pry	Total	Pry	U.Pry	Total
1. No. of Institutions							
i)	Existing Institutions	51	43	94	100%	100%	100%
ii)	Covered during the year	51	43	94			
2. No. of Children							
i)	Approved by MDM-PAB	9400	6600	16000	79%	82%	80%
ii)	Enrolment as on 30.9.2018	11353	7474	18827			
iii)	Average No. of children availed MDM during 01.04.2018 to 31.03.2019	8916	6092	15008			
3. Coverage of children as per Quarterly Progress Report (QPR)							
i)	Average no. of children availed MDM as per QPR-1	7173	5720	12893	63%	77%	68%
ii)	Average no. of children availed MDM as per QPR-2	9402	6339	15741	83%	85%	84%
iii)	Average no. of children availed MDM as per QPR-3	9280	6139	15419	82%	82%	82%
iv)	Average no. of children availed MDM as per QPR-4	9311	6156	15467	82%	82%	82%
4. No. of Working Days							
i)	Approved for FY2018-19	233	233	-	99%	99%	
ii)	Covered during FY-2018-19	230	230	-			
5. Per unit cooking cost Per child per day (in Rs.)							

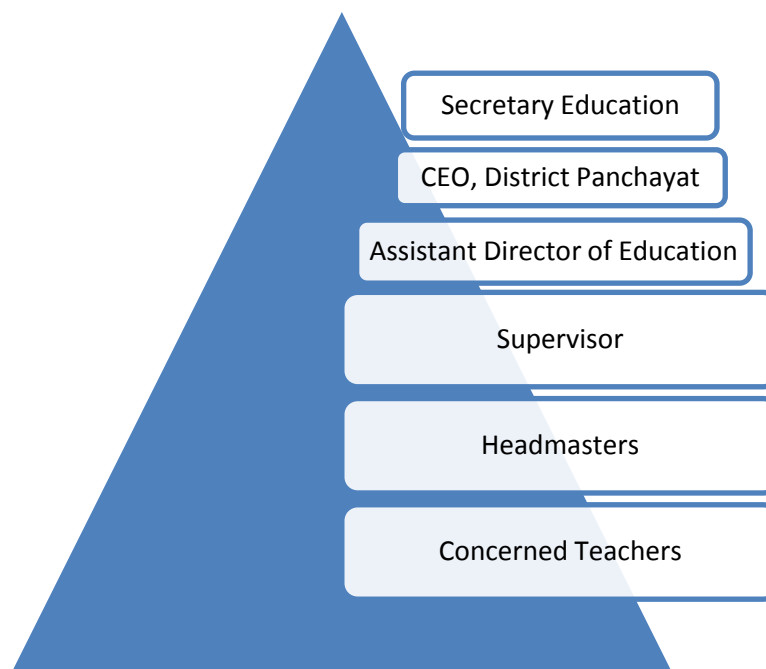
AVERAGE UNIT COOKING COST PCPD	12.34	14.71	
State's contributions in cooking cost per child per day	7.99	8.20	

**percentage to enrollment.*

Part-B : Review of Performance in 2018 (01.04.18 to 31.03.2019)

1. Management Structure

The Management structure for implementation of the Mid Day Meal Programme in U.T. Of Dadra and Nagar Haveli is as under.



2. Analysis of UT performed during 2018-19 and proposals for 2019-20.

2.1. Coverage of children and PGI points:

The PAB-MDM has approved 9400 children at primary and 6600 children at upper primary level, out of which 8916 children at primary and 6092 children at upper primary have availed Mid Day Meal on an average basis during the year 2018-19

Stage	PAB-MDM Approval FY 2018-19 (No of Children)	Average number of children availed MDM	% children availed MDM
Primary	9400	8916	94.85%
Upper Primary	6600	6092	92.30%
Total	1600	32387	90.52%

Under Performance Grading Index (PGI), the *UT of Dadra & Nagar Haveli* obtained score of 10 against the weightage of 10 for indicator No. 1.3.7 i.e. “% of elementary school’s children taking MDM against target approved in PAB – in Govt. and aided schools”. It was

observed that there is a significant difference in the proportion of children covered at primary and upper primary level as is evident from 8916 coverage at primary level compared to 6092 at upper primary level as against PAB-MDM approval. The *UT of Daman & Diu* was advised to take necessary steps to enhance the coverage of children at upper primary level.

2.2. School Working Days:

The PAB-MDM has approved 233 working days at primary and upper primary level, out of which Mid Day Meal was served on 230 working days for primary and upper primary levels respectively. Under Performance Grading Index (PGI), the *UT Daman & Diu* obtained score of 10 against the weightage of 10 for indicator No. 1.3.8 i.e. “% of days Mid Day Meal served against total working days – Govt. and aided elementary schools”. During the year, 3 days could not be covered due to local holiday declared.

2.3. Kitchen cum store :

Central assistance of Rs. 39.39 Lakh has been released from 2006-07 to 2018-19 for construction of 32 Kitchen-cum-Stores. As on 31.3.2019, construction has been completed for 100% Kitchen-cum-stores.

2.4. Kitchen Devices (new as well as replacement):

Central assistance of Rs. 3.70 lakh has been released from 2006-07 to 2018-19 towards procurement of 74 units of kitchen devices. The *UT* has reported that all 74 units of kitchen devices have been procured.

2.5. School Nutrition Gardens:

UT of Daman & Diu informed that 17 schools have kitchen gardens out of 94 schools (18% schools have kitchen gardens) with collaboration with Agriculture department. *UT* is planning for setting up Kitchen Gardens in remaining Schools where land is available.

2.6. School Health Programme (Rastriya Bal SwasthyaKaryakram, Weekly Iron & Folic Supplement, National Deworming Day etc.) and Nutrition in convergence with other Ministries:

It was observed that health check up has been carried out for 16,372 children, out of total enrolment of 18,827 children around 87% coverage.

Enrolment	No. of Children		
	Health check up (RBSK)	Iron & Folic Acid tablets (WIFS)	De-worming tablets (NDD)
18827	16,372	62,476	33,305

The appraisal team of UT is requested to ensure proper monitoring mechanism adopted by the UT for effective implementation of these programmes.

2.7. Tithi Bhojan:

The Concept of “TithiBhojan”, a community participation programme was initiated in the name of “Tithi Bhojan” by the UT Government of Daman & Diu under Mid-Day Meal Scheme by relying on the traditional practice of providing food to large number of people on special occasions such as festivals, anniversaries, birthdays, marriages, and days of national importance etc. *UT informed that date and name of the donors published in the form of Book for the year. The Book circulated to Schools and donors so that the donor know their turn for tithibojan at the particular schools.*

2.8. Training of Cook-cum-helpers and other capacity building activities:

UT of Dadra & Nagar Haveli has informed that 210 cook-cum-helpers engaged in 94 schools, training has been imparted to all 210 (100%) cook-cum-helpers with the help of Health Department and Fire Department.

2.9. Cooking Competition:

The UT informed that this activities could not be carried out because the Centralized Kitchen will be serve Mid Day Meal in coming financial year.

2.10. Supplementary nutritional items (milk, egg etc.):

The UT informed that they are providing additional items like Sukhadi once in a week, Lapsi once a week & Banana trice a week in all 94 schools. *(any other remarks)*

2.11. Data Entry on MIS-Web Portal:

MDM-MIS portal captures information on critical indicators of MDMS. The annual data entry module captures master data on availability of kitchen-cum-stores, kitchen devices, no. of cook-cum-helpers engaged, mode of cooking etc. The monthly data entry module captures data on no. of days Mid Day Meal was served, number of meals served, honorarium paid to cook-cum-helpers engaged, no. of children received IFA tablets, no. of children screened under RBSK etc. The UT of Daman & Diu has completed Annual and Monthly data for all 94 (100% of schools). The State is advised to maintain 100% completion of data entry and also to use the data for better planning and monitoring of the scheme. *(any other remarks)*

2.12. Status of implementation of Automated Monitoring System:

Automated Monitoring System (AMS) has been put in place for real time monitoring of MDMS. Data on number of meals served on the particular day and reasons if meals not served is being captured from schools with no cost to school head masters/teachers. Out of 94 schools, daily data has been reported by all schools i.e. 100 % schools on Automated Monitoring System. In this regard, email alerts are being sent to all States/UTs on daily basis from NIC server. The State is requested to ensure that daily data is being reported by 100% schools on all school working days. Further the State is also advised to analyse the data and use it for better monitoring of the scheme. *(any other remarks)*

2.13. Usage of Temples, Gurudwaras, Jails etc.:

The UT has proposed Centralized kitchen for the next financial year 2019-20.

2.14. Centralized kitchens:

UT informed that a MOU has been signed with the Akshaya Patra Centralized kitchen to serve hot meal supply to 63 schools of Daman District in coming financial year. *(any other remarks)*.

2.15. Awareness generation activities:

UT has informed that following activities have been carried out for awareness generation MDM Logo / Daily Menu are being displayed in all the schools. Conducted monthly meeting with the parents of the children. Adequate awareness has been created among the general public about the mid day meal scheme. UT has proposed the following activities during viz.,

a media campaign will be taken up for 2019-20. The expenditure for these activities will be met from MME component and UT funds. *(any other remarks)*

2.16.Social Audit:

Social Audit has been conducted in UT. Expenditure for these activities will be met from MME component. *(any other remarks)*

2.17.Use of LPG:

100% of Centralized and cluster based kitchens are using LPG as mode of fuel.The UT was advised to take adequate steps to ensure use of LPG in 100% schools.*(any other remarks)*

2.18.Meeting of District level Steering cum Monitoring Committee:

UT informed that only two meeting of District level Steering cum Monitoring Committee under the chairpersonship of the MP have taken place in Daman & Diu. UT also informed that the regular meeting could not be conducted due to busy schedule of Hon'ble MP. UT assured that the District Level Steering cum Monitoring Committee will be conducted regularly on quarterly basis during 2019-20. *(any other remarks)* Many higher level meeting conducted during the year 2018-19. Besides, Inspecting Officers including Chief Executive Officer and Asstt. Director of Education also inspect the schools to ensure that the program is implemented in a hassle free manner.

2.19.Use of Millets / Coarse grains:

It was mentioned that Ministry of Agriculture had decided to celebrate 2018-19 as 'Year of nutri cereals (Millets)'.Millets may continue to be used this year also. It was suggested that the State / UT to explore the possibilities to introduce millets in Mid Day Meal Scheme. *(any other remarks)*

2.20. Other proposals and issues discussed

(here issues like Coverage of Children and Pulses received from NAFED).

3.0. PAB-MDM recommendation for the year 2019-20

It was clarified that the quantification of resources is only an estimate for release of Central Assistance during 2019-20 under the MDM Scheme. The MDM Guidelines provide that every child attending an eligible institution is to be covered under the Scheme and shall be served mid-day meal on all school days. In case the State Govt. finds that the average number of children availing mid-day meal and/or if the working days are more than the approved numbers by PAB-MDM, they may approach the GOI at any time with justification for additional Central Assistance.

After discussions with State officials and based on the performance during 2018-19 the PAB-MDM approved the following number of children, number of school days etc. for quantifying the Central assistance for *UT of Daman & Diu*

3.1. State Govt.'s Proposals and recommendation for 2019-20

S. No.	Component	PAB Approval 2018-19	Proposal for 2019-20	Recommendation for 2019-20
1	Institutions			
1.1	Primary	52	49	49
1.2	Upper Primary	43	43	43
2	Children			
2.1	Primary	9400	9450	9450
2.2	Upper Primary	6600	6550	6500
2.3	NCLP	16000	16000	16000
3	Working Days			
3.1	Primary	233	234	234
3.2	Upper Primary	233	234	234
3.3	NCLP	0	0	0
4	Cook cum Helper			
4.1	Primary	193	193	193
4.2	Upper Primary	127	127	127
5	Drought			
5.1	Children (Pry)	0	0	0
5.2	Children (U Pry)	0	0	0
5.3	Working days	0	0	0

5.4	Cook-cum-helpers	0	0	0
6	Non Recurring			
6.1	Kitchen-cum-Stores	NIL	NIL	NIL
6.2	Repair of kitchen-cum-stores	-	NIL	NIL
6.3	Kitchen Devices	NIL	NIL	NIL
6.4	Kitchen Devices (Replacement)	NIL	15.55	15.55
6.5	Flexible funds for new interventions (5% of the Total Rs. 14.68 Lakhs proposed by the UT under the flexi fund.)			
6.5.1	Supplementary Nutrition over and above existing provisions (including additional items already being provided by State / UT) – No. of children	--	One seasonal once in a week for two months for 9,450 children in Primary classes and 6,550 children in Upper Primary classes (i.e. all students covered under Mid Day Meal)	One seasonal fruits once in a week for two months for 9,450 children in Primary classes and 6,550 children in Upper Primary classes (i.e. all students covered under Mid Day Meal)
6.5.2	School Kitchen Gardens	--	92	92
6.5.3 Any other proposal		NIL	NIL
6.5.4 Any other proposal		NIL	NIL

3.2. Recommended by Appraisal Team - Total Funds for 2019-20

(Rs. in lakh)

Component	Centre Share	Minimum Mandatory State share	Total
Serving of MDM during regular school working days – (B)	254.19	0.00	254.19
Serving of MDM in Drought affected areas during summer vacations – (C)	0.00	0.00	0.00
Non- recurring – (D)	15.55	0.00	15.55
Flexi Funds for new interventions – (E)	13.49	0.00	13.49
Grand Total	283.23	0.00	283.23

- 4.0.** The State is advised to disseminate the approvals of the resources to all the field functionaries in the State and districts so as to enable all the eligible institutions to ensure that every child attending an eligible school must be served hot cooked midday meals on all school days irrespective of the approvals of PAB-MDM.
- 5.0.** The quantification of central assistance of Rs. Rs. **283.23** Lakh has been done as per existing norms on the basis of number of children and working days approved by PAB-MDM for the year 2019-20. The Component-wise approval of funds for 2019-20 is enclosed at Appendix-1.

Annexure – 1

Sl. No.	Component/norm	Amount (Rs. in lakh)
1	2	3
Primary		
1	Cost of Food grains	0.00
2	Cooking Cost	
2.1	Central Share	0.00
2.2	Minimum Mandatory State Share	0.00
3	Transportation Cost	0.00
4	Honorarium for cook cum Helper	
4.1	Central Share -	0.00
4.2	State Share -	0.00
5	Management Monitoring and Evaluation (MME) @ 2.7% of i) Cost of food grains ii) Cooking cost (Central Share only) iii) Cost of transportation and iv) Honorarium to Cook-cum-Helpers (Central Share only)	0.00
PAB Approval - Total Central Share for Primary (Drought)		0.00
Upper Primary		
6	Cost of Food grains	0.00
7	Unit Cooking Cost-	
7.1	Central share	0.00
7.2	Minimum Mandatory State Share	0.00
8	Transportation cost	0.00
9	Honorarium for Cook-cum-Helpers	
9.1	Central Share -	0.00
9.2	State Share -	0.00
10	Management Monitoring and Evaluation (MME) @ 2.7% of i) Cost of food grains ii) Cooking cost (Central Share only) iii) Cost of transportation and iv) Honorarium to Cook-cum-Helpers (Central Share only)	0.00
PAB Approval -Total Central Share for Upper Primary (Drought)		0.00
PAB Approval - Total Central Share – for Serving of MDM in Drought affected areas during summer vacations - (C)		0.00

A. Non-recurring

Sl. No.	Component	Amount admissible (Rs in Lakh)
1	Kitchen-cum-store	
1.1	Central share -	0
1.2	Minimum Mandatory State Share -	0
2	Repair of kitchen-cum-store	
2.1	Central share -	0
2.2	Minimum Mandatory UT Share	0
3	Kitchen Devices (New)	
3.1	Central share -	0
3.2	Minimum Mandatory State Share -	0
4	Kitchen Devices (Replacement)	
4.1	Central share – (19 Units of Kitchen Devices x Rs.10000) +(40 Unit of Kitchen Devices x Rs.15000) + (12 Units of Kitchen Devices x Rs.20000) + (21 Units of Kitchen Devices x Rs.25000)	15.55
4.2	Minimum Mandatory State Share -	0
PAB Approval - Total Central Share - Non Recurring – (D)		15.55

B. Flexible funds for new interventions

Component	(Rs. in lakh)		
	Centre Share	Minimum Mandatory UT share	Total
Serving of MDM during regular school working days – from Table B	254.19	0.00	254.19
Serving of MDM in Drought affected areas during summer vacations– from Table C	0.00	0.00	0.00
Non- recurring– from Table D	15.55	0.00	15.55
Sub Total	269.74	0.00	269.74
Admissible Flexi Funds for new interventions as per sharing pattern (5% of Total of Central and Minimum Mandatory State/UT share i.e. 5% of 269.74 Lakh)	13.49	0.00	13.49
PAB Approvals for flexible funds			
i) School Nutrition Gardens	4.60	0.00	4.60

ii) Supplementary Nutrition	8.89	0.00	8.89
PAB Approval - Total Flexible fund - (E)	13.49	0.00	13.49

C. PAB Approval - Total Funds for 2019-20

(Rs. in lakh)

Component	Centre Share	Minimum Mandatory State share	Total
Serving of MDM during regular school working days – (B)	254.19	0.00	254.19
Serving of MDM in Drought affected areas during summer vacations – (C)	0.00	0.00	0.00
Non- recurring – (D)	15.55	0.00	15.55
Flexi Funds for new interventions – (E)	13.49	0.00	13.49
Grand Total	283.23	0.00	283.23
